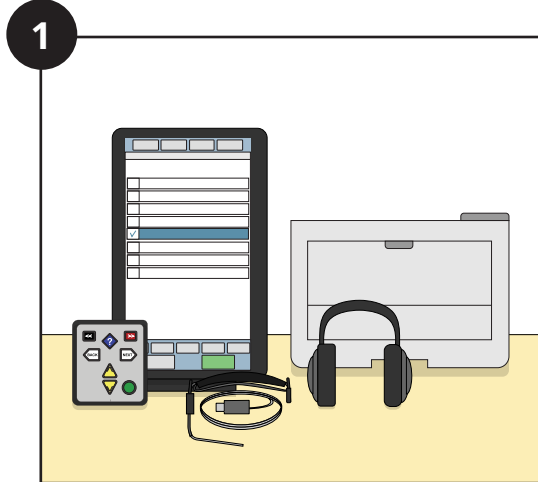


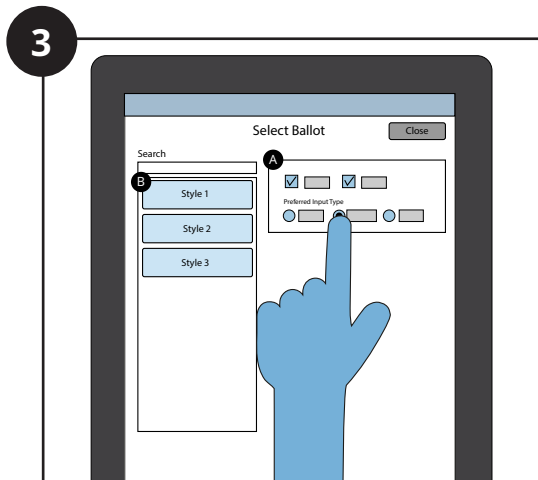
Voting with the ClearAccess™ Ballot Marking Device



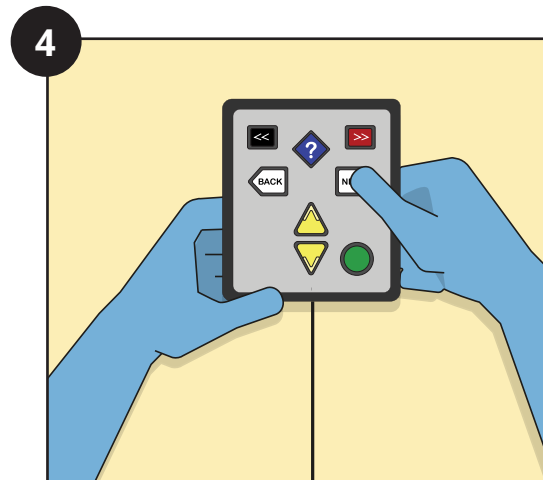
Voter is accompanied to the ClearAccess Ballot Marking Device by a poll worker.



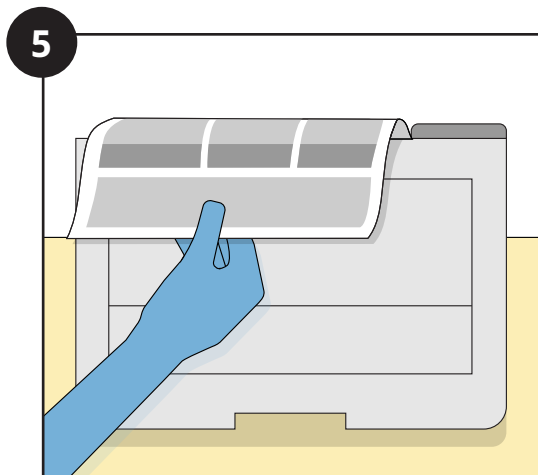
Voter chooses which input device to use: Touchscreen, keypad, or sip and puff.



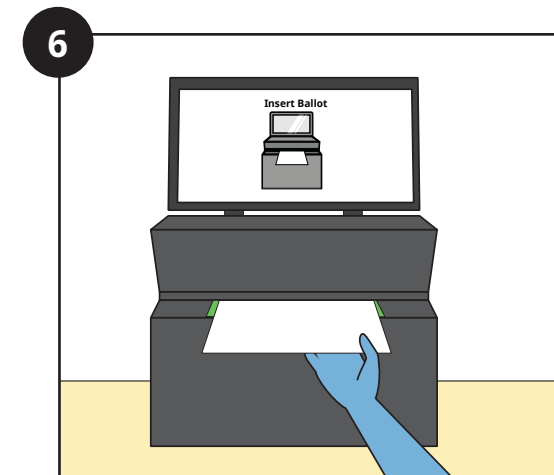
Poll worker logs in and chooses the precinct, ballot style, and input type for the voter.



Voter uses their chosen input device to mark their ballot. (See instructions for input devices on pages 2-4.)



Voter prints and reviews their ballot.



Voter casts their ballot through the ClearCast™ tabulator.



CONTEST SCREEN

Tap **Settings** for Magnification, Color and Contrast, Audio ballot playback, Visual ballot display.

Tap the box to the left of the candidate's name to make a selection, tap again to deselect your choice.

Tap the box to the left of the **Write-In** option to prompt the Write-in Screen (see below).

Tap **Review Votes** to view the Ballot Review Screen (see bottom of page).

Tap **Cancel** to Cancel the voting session.

Tap **Help** for Voting Instructions.

WRITE-IN SCREEN

Tap the letters to enter the Write-In candidate's name.

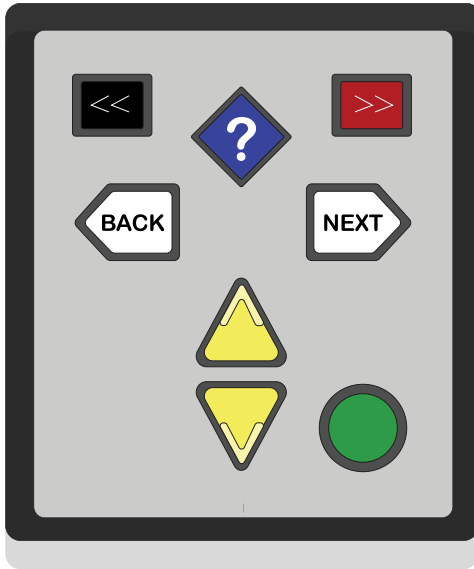
Tap **Accept** to save the candidate's name

REVIEW SCREEN

Tap a contest to return to that contest screen to vote or edit choice.

Tap to scroll down and see more contests.

Tap **Print** to print ballot.



CONTEST SCREEN



Press the **red rectangular key** in the top right to access Settings screen to change Magnification, Color, Contrast, Audio ballot playback, and Visual Ballot Display.



Press the **yellow triangular up arrow key** in the bottom center for previous choice and down for next choice.



Press the **green round enter key** in the bottom right to select or deselect a choice or to access the Write-in Screen (upper right).



Press the **right white arrow key** in the middle right to skip to the next contest. Hold for one second to Review votes.



Press the **left white arrow key** in the middle left to skip to the previous contest. Hold for one second to Cancel voting session.



Press the **blue diamond key** in the top center to access the Help screen for Voting Instructions.

WRITE-IN SCREEN



Press the **yellow triangular up and down arrow keys** in the bottom center to reach a desired character



Press the **right white arrow key** in the middle right to accept letter and continue to next character



Press the **green round enter key** in the bottom right to accept Write-in choice

REVIEW SCREEN



Press the **yellow triangular up and down arrow keys** in the bottom center to scroll and review votes



Press the **green round enter key** in the bottom right to return to selected contest



Press the **right white arrow key** in the middle right to Print Ballot

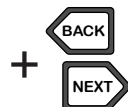
THE SHIFT KEY



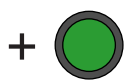
The **shift key**, the **black rectangle in the upper left**, changes button behaviors when pressed at the same time as the following:



Press the **shift key** and the **yellow triangle up or down key** in the bottom center to increase/decrease volume



Press the **shift key** and **white arrow left or right keys** in the middle to increase/decrease speech playback rate



Press the **shift key** and the **green round enter key** in the bottom right to pause and resume speech playback



Press the **shift key** and the **red rectangular key** in the upper right to skip to the next sentence



Press the **shift key** and the **blue diamond key** in the upper middle to skip back to the previous sentence



CONTEST SCREEN

TRIPLE PUFF

Access **Settings**:
Magnification, Color, Contrast,
Audio ballot playback, and
Visual Ballot Display

SINGLE PUFF

Go to next choice

SINGLE SIP

Return to previous choice

LONG PUFF*

Select or deselect a choice, or
to access the **Write-in** Screen
(below)

LONG SIP*

Access the top menu

TRIPLE SIP

Cancel the voting session

DOUBLE SIP

Go to previous contest

DOUBLE PUFF

Go to the next contest

WRITE-IN SCREEN

SINGLE PUFF

Scroll forward through
characters

SINGLE SIP

Scroll backward through
characters

DOUBLE PUFF

Accept letter and continue
to next character

LONG PUFF*

Accept the Write-In
candidate's name

REVIEW SCREEN

SINGLE SIP

Advance through the contest
and candidate list

LONG PUFF*

Return to selected contest on
the ballot

DOUBLE PUFF

Print the ballot

*A long sip or puff is about a half-second long